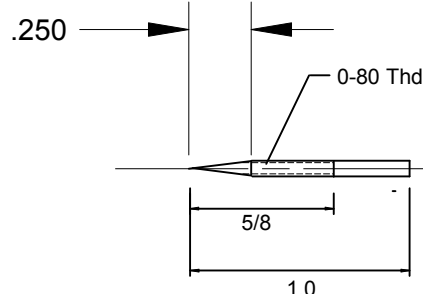
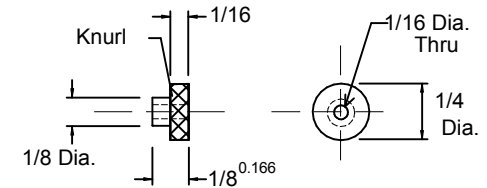


JAM NUT
5/16 Brass or
aluminum hex stock

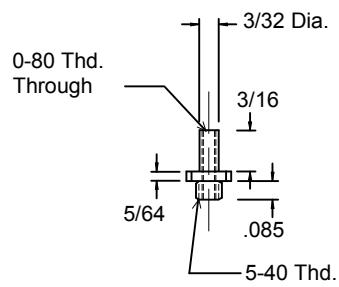


NEEDLE
Brass Rod
1/16 Dia.

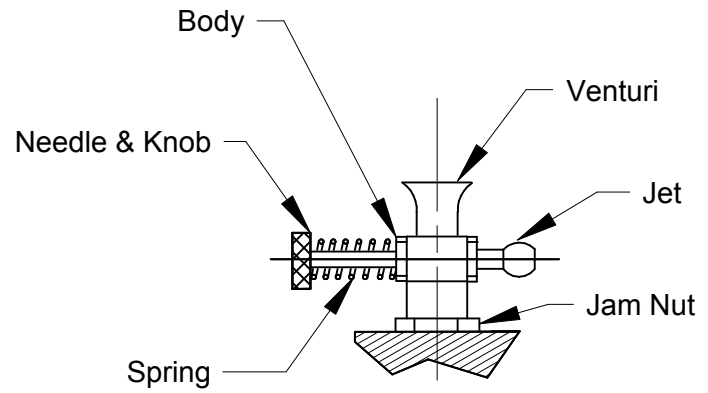


KNOB
Brass

Note: Solder Knob to Needle

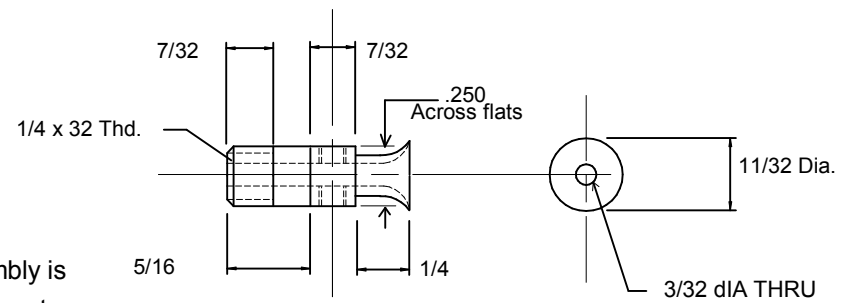


NEEDLE VALVE BODY
3/16 Brass Hex Stock

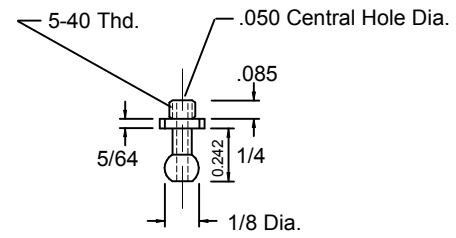


ASSEMBLY

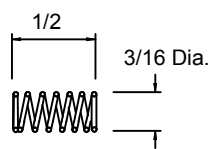
Note:
If the Cox TD 049 needle valve assembly is
not available, use this alternative fuel system



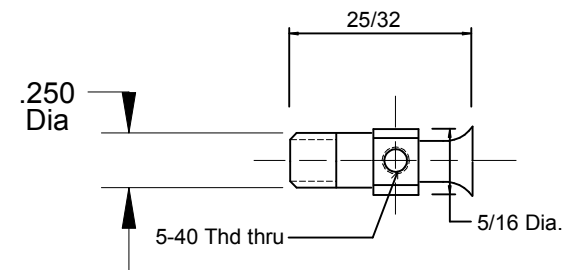
VENTURI
Aluminum



FUEL JET
3/16 Brass Hex Stock



NEEDLE VALVE SPRING
Cut from ball point spring



5.

ALTERNATIVE FUEL SYSTEM
FOR THE SCHROEDER TWIN